

# Emergency Modular LED Luminaire

## Specification:

**Main Body:**

Marine Grade Aluminium

**Diffuser:**

Polycarbonate

**Gaskets:**

Silicone

**External Fasteners:**

A4 Stainless Steel

**Stirrup Bracket:**

316 Stainless Steel

**Weight:**

9.0kg per module



## Key Features:

- Battery back up power provides 3 hours at 50% illumination, 90 minutes at full illumination.
- Modular construction allows the modules to be supplied interlinked with each other to provide greater light output.
- Can be used as a single unit – small floodlight or bulkhead or linked together to replicate a large 250W/400W floodlight.
- Can be supplied in multiple configurations of standard or emergency modules.
- Each module utilises 48 off 1.2W LED's
- Integrated power supply.
- Low power consumption.
- Rugged construction – resistant to vibration.
- Independently photometrically tested.
- All units supplied with 2 cable entries. Additional entries available on request.
- IP66 and IP67.

- Optional wire guard available for extra protection.
- Narrow, Medium, Wide and Extra Wide beam light output available.
- Multiple mounting options available.

**In comparison to typical floodlights:**

- 70% less weight.
- 50% less power consumption.
- One man installation.
- LED technology will give a predicted lamp life of 10 years+.
- No light pollution.
- Instant start and restrike.
- No light degradation at low temperatures.
- Penetrating white light.
- Photocell option available.
- Low cost of installation, operation and maintenance.

**Union Supplies**  
Blackness Road  
Altens Industrial Estate  
Aberdeen  
AB12 3LH

Tel: +44 (0) 1224 897755  
Fax: +44 (0) 1224 877121  
sales@unionsupplies.com  
www.unionsupplies.com

**Aberdeen**  
Baku  
Dubai  
Houston

**UNION**  
SUPPLIES

# Emergency Modular LED Luminaire

Protection:

IP66/67

Electrical Specifications:

	Electrical Specification		
Lamp Options	Power consumption	Power factor	Available power supplies
48 x 1.2W LED's	70W Max	0.95	110V – 240V 50/60Hz AC only
96 x 1.2W LED's	140W Max		
144 x 1.2W LED's	210W Max		

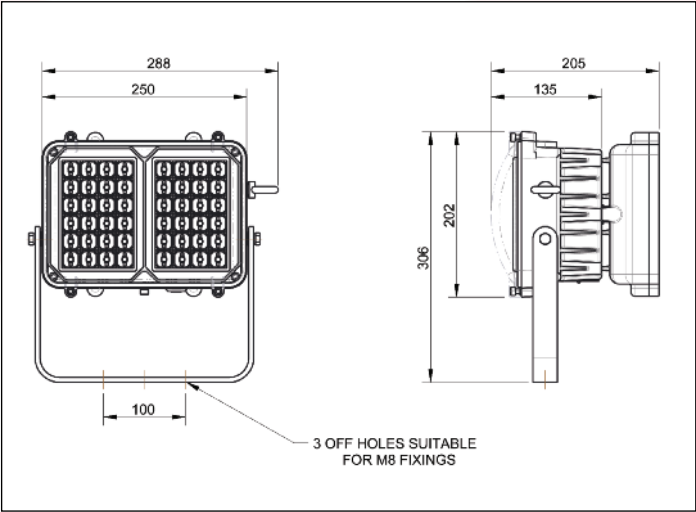
Installation:

**Terminals:** Up to 4mm² terminals for live, neutral, earth and looping are provided. Internal and external earth as standard.  
**Cable Entries:** 2 x M20, one fitted with stopper plug, other entries available on request.  
**Suspension:** Via stirrup bracket, other mounting accessories available. Stainless steel eyebolt for safety chain included as standard.  
**Installation:** Installation document AL105788 supplied.

Ordering Matrix:

Field	Options
Product	HDN106
Version (LEDs)	E – Emergency (48 LEDs) ES – Emergency/Standard (96 LEDs) SES – Standard/Emergency/Standard (144 LEDs) (All combinations available)
Beam Pattern (add per module)	N – Narrow M – Medium W – Wide X – Extra Wide
Light	W – Cool White light X – Warm White light Other colours available on request.
Cable Entries	0 – M20 5 – M25
Casting Colour	04 – Colour RAL 7035 (Grey)
Other Options	H – Horizontal (available on single units only)

Dimensions:



**Weight:**  
48 LED Luminaire: 9kg  
96 LED Luminaire: 15-18kg  
144 LED Luminaire: 21-27kg

**Notes:**  
1) Typical ordering reference HDN106EEEEMMW004.  
2) Photometric Data available from the website or contact sales office.



**Union Supplies**  
Blackness Road  
Altens Industrial Estate  
Aberdeen  
AB12 3LH

Tel: +44 (0) 1224 897755  
Fax: +44 (0) 1224 877121  
sales@unionsupplies.com  
www.unionsupplies.com

**Aberdeen**  
Baku  
Dubai  
Houston

